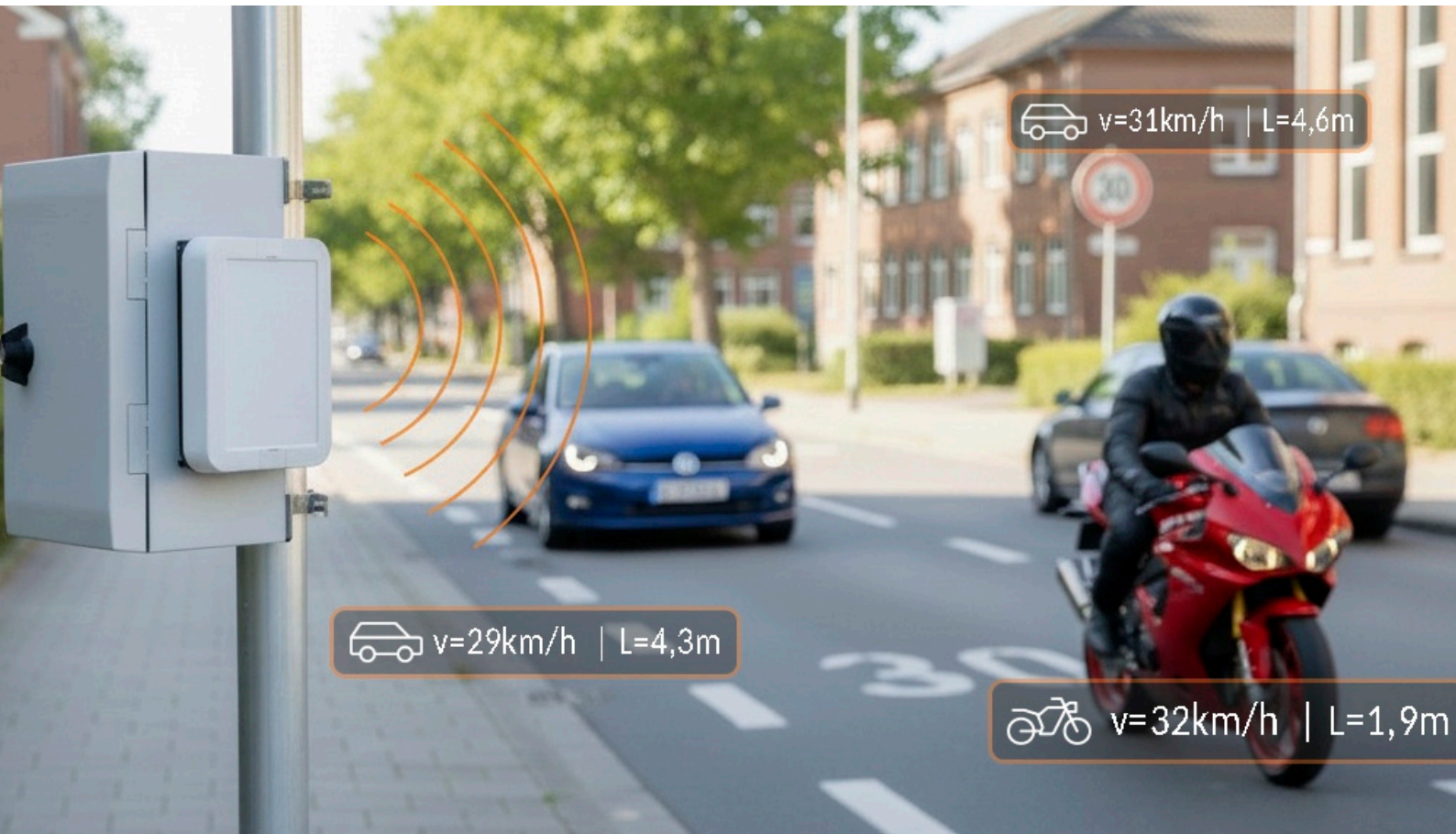


Traffic Radar SR7



Features

- 4 radar antennas continuously scan the traffic flow
- Automatic detection of the measuring angle
- Lane information for every vehicle
- Axle detection to improve **classification accuracy** (8 + 1 vehicle classes)
- Records for every vehicle: speed, length, gap, class, axle count, direction and lane
- Large internal memory for > 1 million vehicles
- **Integrated 4G LTE modem for online data access**
- Browser-based analysis with SRA Web – no local installation required
- Bluetooth for device setup and local data transfer
- **STerminal 3 app for Android and iOS**
- GPS positioning to prevent data mix-ups and to sync time
- Supply-voltage measurement
- Deep-discharge protection for batteries
- **Easy one-man installation in under 5 minutes**
- Short set-up time – rough alignment is sufficient; the device calibrates itself automatically

Highlights

A mobile traffic detection device to the highest quality standards! The SR7 combines easy and quick mounting on the roadside, without the need of any construction work, without stopping the flow of traffic, with highest accuracy level on data detection.

The device calibrates itself automatically to the course of the road, making installation as easy as possible.

The internal radar even detects axles and the axle positions and uses this information for optimized classification of vehicles.

Due to its energy-saving operation the SR7 is able to gather traffic data on roadside for a period of more than 2 weeks continuously.

The collected data can easily be retrieved using any webbrowser on any system from everywhere.

Electrical Data

Input Voltage	12V DC
Power Consumption	Low Power Design! < 0,5W (!)

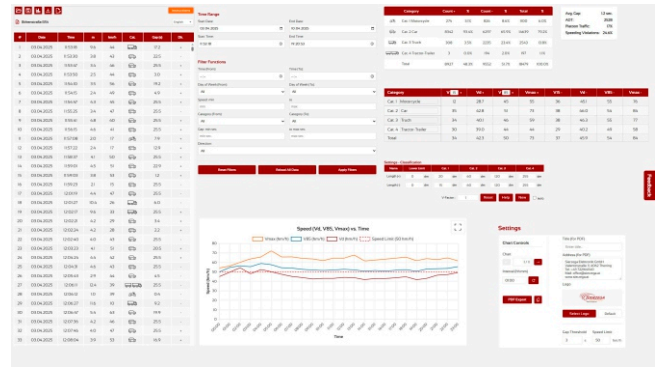
Radar Sensor

Operating Frequency	K-band (24 Ghz)
Transmitting Power	5 mW
Certification	CE approved
Operating Speed	15 ... 180 km/h or 10 .. 115 mph
Accuracy	Speed \pm 3 %

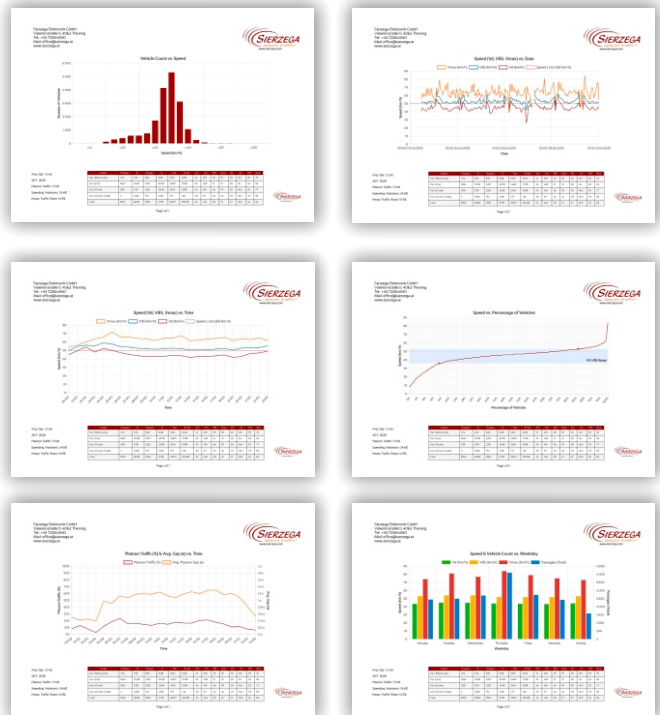
Mechanical Data

Dimensions	30 x 20 x 15 cm
Weight	~ 3 kg without Battery
Enclosure	Glass-fibre-reinforced plastic
Protection Degree	Radar Module Ip68
Operating temperature:	-25 °C to 60 °C -13 °F to 140 °F

Analysing Software SRA Web

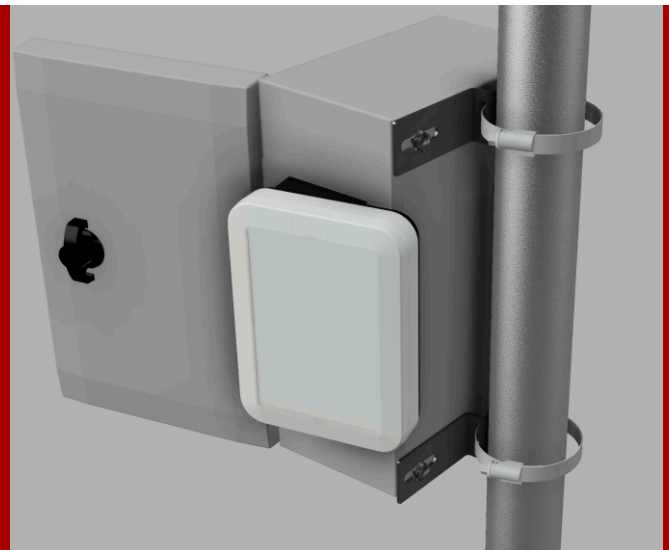


10 + 1 Charts



Scope of Delivery

- Traffic Counter and Classifier SR7
- Analysing Software SRA Web
- Pole Brackets (for mounting the SR7 enclosure)
- Battery Cable for 12V / 18Ah cells
- Optional: 12 V / 18 Ah Battery
- Optional: Battery Chargers and Solar Power Supply



© 2025-05 Sierzega Elektronik GmbH. All rights reserved. Specifications included in this datasheet are subject to change without notice.

Sierzega develops, manufactures and delivers high-performance radar systems worldwide, including radar-controlled LED displays and advanced traffic detection systems. The company stands for innovative technology, precise measurement solutions and reliable traffic monitoring and analysis systems.